

Lamprey River Advisory Committee
Overseeing the Lamprey Wild and Scenic River
2008 Report



In 2008, the Lamprey River Advisory Committee (LRAC) continued to be the eyes and ears for the Lamprey River. LRAC conserved five river corridor parcels and embarked on a project to eradicate Japanese knotweed, while participating in a variety of other river activities. Kevin Martin (Epping) stepped down as Chair of the Committee, after three years of outstanding leadership. Sharon Meeker (Lee), a longtime member of LRAC, took Kevin's place as Chair.

2008 was a banner year for land conservation for the Lamprey River Advisory Committee. Working with landowners to conserve their land is often a long term process. This was true for the five projects which came to fruition in 2008. A total of 341 acres with almost a mile of river frontage was placed under a conservation easement in 2008. In recognition of this tremendous success and in appreciation of all of the landowners who have placed their Lamprey River land in conservation over the past eleven years, LRAC and our partners hosted a festive and well attended landowner appreciation event at the Lee Grange Hall. Since LRAC began in 1997, 1807 acres and almost 11 miles of river frontage had been conserved by the end of 2008, with every \$1.00 of LRAC funds being matched by \$3 from donations and other funding sources.

The Lamprey River Advisory Committee accomplishments in 2008 include:

Land Conservation



<u>Owner</u>	<u>Partners</u>	<u>Acres</u>	<u>River Frontage</u>	<u>Town</u>
Spang	NRCS*	91.43	1,535'	Durham
Kelsey	NRCS	113	0	Durham
Kelsey	Town of Lee	24	0	Lee
Wellington	NRCS	113	2,140'	Lee
Thibeault**	Town of Lee	.67	985'	Lee

* NRCS stands for Natural Resource Conservation Service

** for hand-carry boat access and parking

Recreation



A beautiful new recreation tour map and brochure was created, printed, and distributed. A copy was sent to each riverfront landowner in the four Wild and Scenic towns (Epping, Lee, Durham and Newmarket). The tour features twelve stops and nine points of interest.

The Recreation Subcommittee is currently working to create an information kiosk at one of the recreation tour stops – Mary Blair Park. Similar kiosks will be installed, in

cooperation with each town, at many of the other recreation tour stops.

The Recreation Subcommittee has also begun the process for building a hand-carry boat launch on the former Thibeault property, which is just above Wadleigh Falls in Lee.

Invasive Species Eradication



LRAC, in partnership with the Lamprey River Watershed Association (LRWA), organized an ongoing effort to eradicate Japanese knotweed from the river. This invasive plant has been appearing in more and larger stands along the river, taking over significant areas of native habitat. In 2008 LRAC and LRWA researched knotweed, made connections with others in the region who are working on this problem, and hired a coordinator. Two areas were identified for pilot projects:

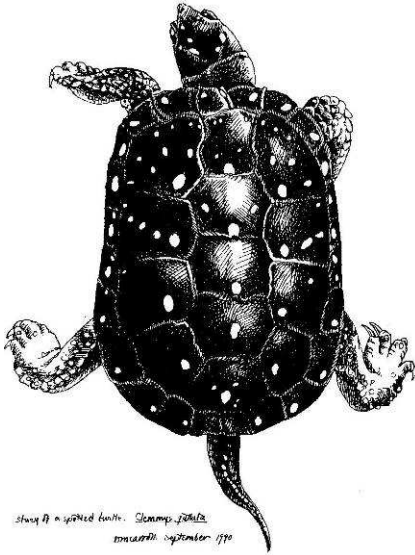
Wadleigh Falls and the Epping Town Hall to the Route 125 bridge. After obtaining landowner permission, volunteers cut and hauled knotweed at both sites. A permit was received from the Division of Pesticide Control to spray appropriate herbicide at both sites. Two grants were secured from the Department of Agriculture's Integrated Pest Management program: \$4,500 for phase I in 2008 and \$12,500 for phase II in 2009. Currently, we are working on a strategic plan for the entire watershed, based on the Streamwalk inventory that was conducted in 2008 by LRWA volunteers.

Wiswall



LRAC has followed and participated in the design process for the Wiswall Bridge replacement. LRAC has spoken up for the bridge aesthetics, historical integrity, recreation access, and impact to the river. LRAC will continue to participate in this process, with a focus on creating an informational/historical kiosk in Wiswall Park. LRAC also continues to participate in committees responsible for creating fish passage at Wiswall Dam.

Wildlife



A turtle survey was conducted by Jon Carroll, comparing data and observations collected over the past fifteen years. Unfortunately, turtle populations appear to be in decline. This is inevitably the result of increased development of the land near the river. LRAC would like to conduct more investigations of turtles and other wildlife, to help guide land conservation priorities and land management recommendations.

River Cleanup



During National River Cleanup week, LRAC sponsored a public cleanup of the Lamprey River at Wadleigh Falls.