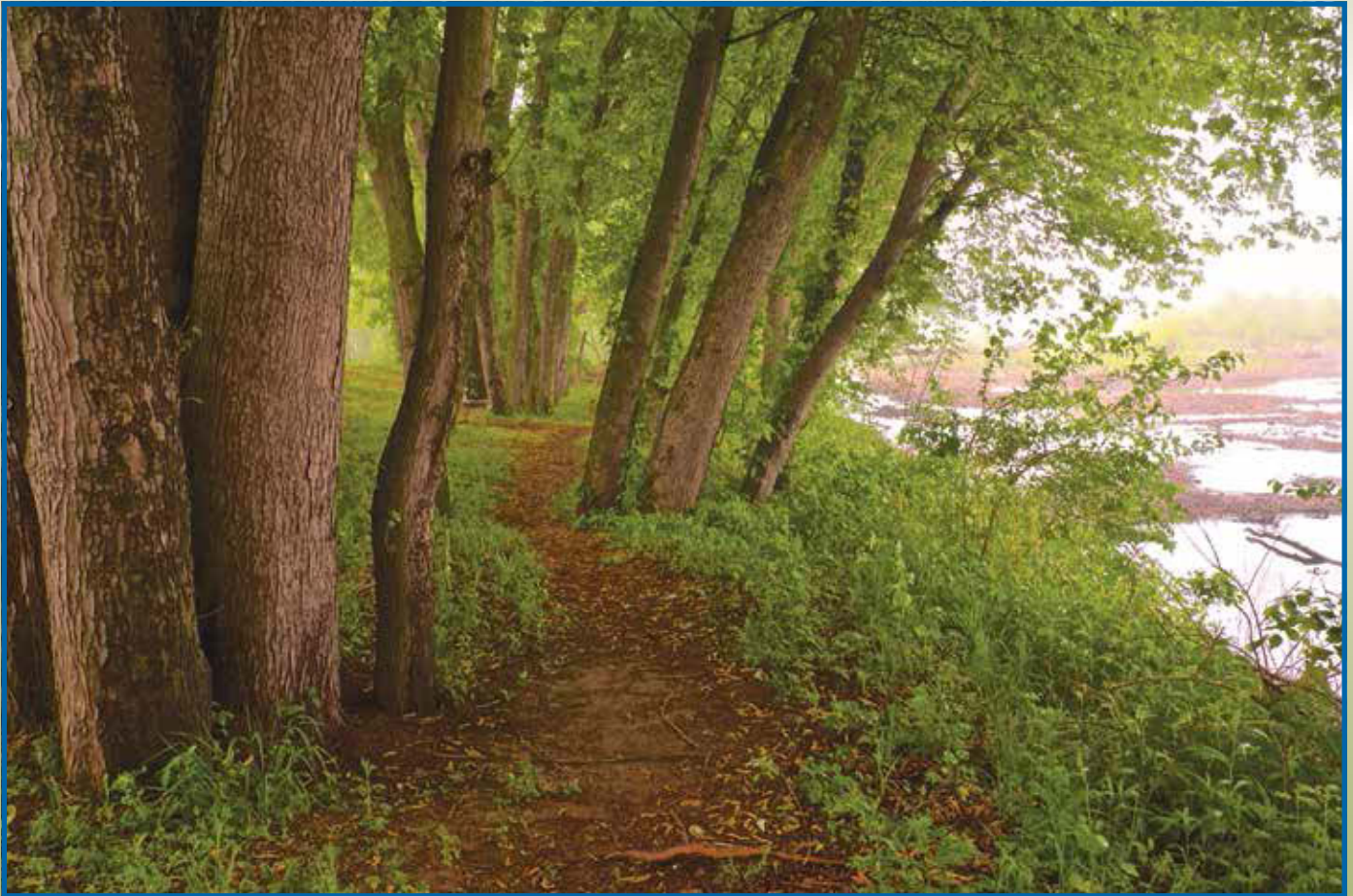


PARTNERSHIP WILD & SCENIC RIVERS



**20 Years of Success
Protecting Nationally Significant
River Resources through
Locally Based
Partnerships**



Sustaining Local Partnerships for Lasting Success



Partnership Wild and Scenic Rivers (PWSRs) is a unique category of designated rivers managed through long-term partnerships between the National Park Service and local, regional and state stakeholders. This locally-driven, collaborative planning and management approach to river conservation is an effective alternative to direct federal management and administration. Nationally-designated river protection, anchored by federal funding, leverages substantial additional state, local, and private funding.

PWSRs and the land surrounding them benefit from the hundreds of committed people contributing thousands of their volunteer hours and donating professional and other in-kind services to protect, manage and enhance our national Outstandingly Remarkable Values: scenic, recreational, geologic, fish and wildlife, historic, and cultural.



PWSRs have a 20+ year track record of successful partnerships, with 13 designated rivers in 8 states covering more than 700 river miles. In 2007, PWSRs were named by the Ash Institute for Democratic Governance and Innovation (at Harvard University's John F. Kennedy School of Government) as among the country's best examples of programs that innovatively link government and citizens. Today, Congress continues to add new rivers and appropriates the funding necessary to support them. This publication is a testament to, and highlights the important achievements made on and along, the nation's Partnership Wild and Scenic Rivers.

SUDBURY, ASSABET AND CONCORD RIVERS

The Success of the SuAsCo River Stewardship Council

The River Stewardship Council has through its work gained credibility and clout as an effective voice for rivers. The WSR designation has brought together town, state and nonprofit representatives to establish a body that has been effective at guiding regulatory and other processes. Areas influenced include permitting of bridges (historic and aesthetic improvements/protections, public access improvements), wastewater discharge permitting, municipal water withdrawal permitting, cell tower locations, stormwater management on development sites, and allocation of superfund remediation funds.

By Alison Field-Juma – Executive Director, OARS

We asked two local representatives from our partnership rivers to discuss what designation has meant to them. Here are their responses:

Q&A's From the River Managers

UPPER MISSISQUOI AND TROUT RIVERS

What has Wild and Scenic helped you accomplish to date?

Designation! In a joint statement following our December 2014 designation Vermont's Congressional delegation (Sen. Bernie Sanders [I-VT], Sen. Patrick Leahy [D-VT], and Rep. Peter Welch [D-VT]) noted: "Vermont's rivers are an essential part of our state's rural character. The Wild and Scenic designation highlights the unique cultural, scenic and recreational qualities of these Vermont rivers. The recognition also empowers communities along the rivers to protect these resources." The outreach and education efforts of the Committee brought together sometimes opposing stakeholders to wrangle with issues brought up in the Study, and whether designation was right for our region. One Committee member noted that maintaining local participation and ownership of the Study and getting input from all key partners was very beneficial to the process. We are excited about forming the post-designation Committee and seeing where designation will take us.

What are your hopes for the next 20 years?

How do you see Wild and Scenic helping you accomplish your goals?

"Designation will highlight the outstanding and remarkable scenic and recreational qualities of the Missisquoi and Trout Rivers. Many local people have worked hard for this designation that will help emphasize the recreational uses of the rivers, while maintaining the rights of landowners and residents who have a stake in the rivers' future," said Jacques Couture, chair of the Upper Missisquoi and Trout Rivers Wild and Scenic Committee. The twofold goal of the Committee is to use the Management Plan as a framework to encourage local, state and federal planning that takes into consideration the Outstandingly Remarkable Values for which the rivers were designated, and to make decisions that protect the resources of the Missisquoi and Trout Rivers.



How would you assess the Partnership-based management approach to Wild and Scenic?

Overall, the Committee believes that the Partnership approach was a good one and that Vermont's designation would most likely not have occurred otherwise. The Committee believes that designation as a Partnership Wild and Scenic River, based on the implementation of a Management Plan through a locally-based Committee, can importantly benefit our rivers and our communities. The goal of this Partner approach is to maintain local governance and control of the rivers and their valleys; it does not involve federal acquisition or management of lands. The National Park Service served in an advisory role and encouraged the Study to unfold as a grassroots effort. The meetings of the Study Committee, open to the public and driven by consensus, provided a regular and reliable forum for discussion, research, consensus building and action around river matters. Moving forward, the post-designation Upper Missisquoi and Trout Rivers Wild and Scenic Committee will bring together municipalities and key partners on an ongoing basis to promote good decision-making affecting the Rivers.

How has the WSR designation specifically helped preserve ORVs on your river?

Our Committee hopes that our monthly meetings and activities will provide a forum for discussion, research, and consensus building around river matters, and that our actions support good river management.

CONTINUED

What support (e.g., volunteer, funding, partners) has Wild and Scenic helped you leverage?

The Committee learned that our communities cherish our rivers and surrounding valleys for a variety of reasons including, among others, their agricultural heritage, rural character, quality waters, recreational opportunities, scenic views, traditional way of life, history, and diverse natural resources. The Committee found a strong desire, among a wide diversity of folks, to preserve the character of the river valleys and the quality of life in the region: the working landscape, healthy farms and forests, good water quality, vibrant communities, and recreational opportunities. At the end of our Study the Committee had official appointees from nine municipalities and attendees from five partner organizations. The post-designation Committee hopes to grow the number of volunteers and partners involved with the Committee. Since receiving our designation, the Lake Champlain Basin Program (which works with partners in New York, Vermont, and Québec to coordinate and fund efforts to address challenges in the areas of phosphorus pollution, toxic substances, biodiversity, aquatic invasive species, and climate change) has pledged support of the Committee and our endeavors. We look forward to working with multiple partners to facilitate positive river management.

By Shana Stewart Deeds – Upper Missisquoi and Trout Rivers Wild and Scenic Committee Coordinator

THE MAURICE RIVER AND ITS TRIBUTARIES

What has Wild and Scenic helped you accomplish to date?

The most important outcome resulting from our designation has been conservation groups' taking a collective interest in the future of the Maurice River and its designated tributaries, the Manumuskin, Muskee and Menantico Rivers. A number of preserves were created during the designation process and since then. Organizations have sought to link preserved spaces in order to both enlarge corridors for the movement of creatures and enhance the enjoyment of wildlife enthusiasts. Wild and Scenic designation adds a level of substantial review and land use requirements that bolsters protections of both protected and unprotected lands. Our organization, Citizens United to Protect the Maurice River and Its Tributaries, Inc. (CU), has approximately 2,200 members and a committed corps of volunteers who log more than 10,000 hours of work toward our mission: *Protecting the watershed and the region known as Down Jersey, and enabling current and future generations to enjoy the environmental, recreational, cultural and scenic resources of this global treasure. CU empowers individuals, organizations, and neighboring communities to promote the region's enduring well-being. We invite participation and foster responsible stewardship. CU supports education, awareness, and informed decision-making utilizing field work, research and advocacy.*



Juvenile Osprey.

What are your hopes for the next 20 years?

How do you see Wild and Scenic helping you accomplish your goals?

Wild and Scenic designation is a great tool to highlight the special nature of the river to local residents. Trying to get across to them the idea that the waterway is a national treasure — that they play a major role in protecting — is a challenge. We would like to see more property owners increase their stewardship role, specifically in the way in which they manage their properties, and especially regarding native plantings, growing smaller lawns, using less water and increasing buffers. We also have a great many volunteers who are helping with a number of different wildlife habitat projects.



Because of the vast amount of protected space in our watershed, wildlife management issues need to be addressed. Local land trusts and the State Division of Fish and Wildlife work hard to define their priorities. Yet addressing the controversial wildlife and habitat issues remains very difficult. Invasive species, feral cats, phragmites infestation, year-round Canada geese, mute swans, off-road vehicles, and a host of other problems are very challenging to address. Financial resources and public opinion often thwart seemingly logical solutions for these issues. Many behaviors that negatively impact the environment

CONTINUED

are ingrained in the local culture and supported by popular belief systems. As examples, people neuter feral cats and release them into wildlife management areas thinking that they are protecting animals; America's love of off-road vehicles has turned state parks into a Wild West of riders who plunder our forests and streams; swans are revered for their beauty, with little understanding about the damage they inflict. We could fill pages about the many conflicts that exist. The public needs to be educated as to how a multitude of issues/activities affect outstanding resource values, and logic often does not win out. Our goal will be to educate the public and make repeated and compelling arguments about the need to address these issues, so that our responsibility to the river's outstanding resources remains the primary focus. It is the long-term defining and defending of these resources that is the hallmark of the Wild and Scenic Partnership.



Visitation is a major component in our River Management Plan. We constantly seek ways to offer the public positive experiences in and around our rivers. We make every effort to keep the programs fun, interesting and informative. Building a stronger base of stewardship is a major goal. Continuing our very ambitious program with limited staff and resources will remain our challenge.

How would you assess the Partnership-based management approach to Wild and Scenic?

The agreements that we have with the National Park Service spell out obligations for deliverables and the Park Service's responsibilities regarding our performance of these activities. They establish a basis for a partnership that is critical to our carrying out aspects of Wild and Scenic for which we have no direct administrative function, as in Sections 7 and 10 under the Act. In particular, when there are permit reviews, the National Park Service, along with other administrative entities, often have roles to intervene to protect outstanding resource values. State agencies are compelled to interact with the National Park Service on a level different than they do with other public stakeholders, such as our organization. In fact, in some cases state statute dictates federal review.



Wild About Cumberland introduces hundreds of fourth graders to the natural world.

How has the WSR designation specifically helped preserve ORVs on your river?

First and foremost, the commitment that the State and conservation organizations displayed in protecting important large tracts of land that border our rivers was motivated, in part, by the designation. Secondly, five of our member municipalities each adopted a river conservation zone that is part of its local land use management plan. Our organization, and a network of caring individuals, must make sure that the land-use boards within these municipalities adhere to the obligations and terms of these NPS-approved plans.

There have been times when concerned citizens and NPS have had to remind municipalities of their role in the process. On some of these occasions, public scrutiny was enough to make officials rethink plans. At other times, NPS has successfully intervened at some point in the review process.

What support (e.g., volunteer, funding, partners) has Wild and Scenic helped you leverage?

NPS support has been critical to our work. Cooperative agreements have closed much of the gap between our membership contributions and our budgeting needs. Our county is the poorest in New Jersey and our watershed population is sparse. Many social issues are viewed as a greater priority than environmental health. We use a combination of expert volunteers, staff, and financing from our membership to leverage donations from other granting sources. But it is the long-term, organizational capacity support for our organization which NPS provides that is a crucial component.

By Jane Morton Galetto — Citizens United to Protect the Maurice River and Its Tributaries, Inc.

Connecting People to the River

THE TAUNTON RIVER

Preserving Our Recreational and Natural Resource Assets in Freetown

The Taunton River Stewardship Council (TRSC) provided funding for restoration work completed at Hathaway Park in Freetown, MA. The Hathaway boat ramp is well utilized and provides access to the Taunton River via the Assonet River, one of the main tributaries to the Taunton. The ramp area along the riverbank had eroded over the years due to a combination of flooding and vehicular traffic.

To help reduce and prevent this erosion problem, and to help restore the riverbank resource area, the town of Freetown agreed to put in large stone and repair the edge of the boat ramp. A grant from the TRSC enabled the town to hire Theresa Sprague, from Blue Flax, to develop a buffer zone plan to accomplish this. The plan called for the planting of native plant species along the riverbank and installing a split rail fence to protect the area from vehicle and foot traffic.

This site was identified as an area in need of repair by the recent "Coastal Flood Hazard Inundation Study," completed by Save the Bay and SRPEDD.

By Bill Napolitano — Taunton River Stewardship Council



New streambank restoration and planting has transformed this once heavily eroded access point.

THE LAMPREY RIVER

Signage and Kiosk Improvements

The Lamprey River is something of a hidden gem on New Hampshire's seacoast. Much of the land is privately owned, which limits public access. Sites where the public can freely access the river offer an exceptional opportunity to inform and engage visitors about the recreational, ecological, and cultural resources of the river. The Lamprey Rivers Advisory Committee (LRAC) has a solid track record of working with partners to create useful and beautiful signs and kiosks:

- The main kiosk at Mary Blair Park in Epping, as well as support for a history trail with four smaller signs (Epping Conservation Commission, Epping Historical Society)
- Flood plain ecology and wildlife passage along Route 87 in Epping (Epping Conservation Commission)
- Four panels describing mill history, water power, balancing fish restoration with historic preservation, and honoring the legacy of a local river champion at Wiswall Falls in Durham (FEMA, NRCS, Durham Historic Association, Durham Conservation Commission)
- Historic links between the Lamprey River and Great Bay plus conservation efforts in the town of Newmarket (Newmarket Conservation Commission)

Photo by R.H. Lord



(Left-right) Dick Lord and Preston Samuel (LRAC), Kevin Martin (NH Big Tree Program Coordinator), Jake Poirier (UNH graduate student in hydrology)

"When working on kiosks, we have to balance many, sometimes conflicting, needs. But in the end, the kiosk is always so much better when everyone's voice can be included."

CONTINUED

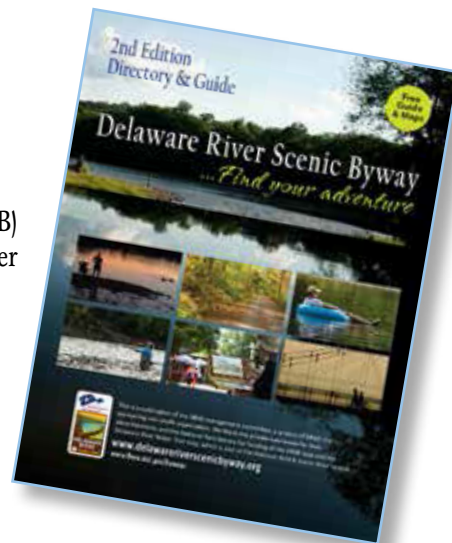
Until recently, residents and visitors in the town of Lee, NH had no public access to the Lamprey River. This sign, installed in 2014, was the culmination of years of work to provide access. The LRAC purchased the small parcel of land and donated it to the Town of Lee. The LRAC then constructed a granite canoe launch in 2011. The LRAC worked closely with the Lee Conservation Commission on the sign's text and design, and then installed it. This sign is a visible reminder that the river is an asset for all to enjoy and protect.

By Suzanne Petersen – Outreach Specialist, Lamprey River Advisory Committee

THE DELAWARE RIVER

Volunteer Efforts Provide Grant Funded Maps to the Public

In partnership with the National Park Service (NPS), the Delaware River Scenic Byway (DRSB) has released a second edition promotional guide for the Lower Delaware Wild and Scenic River and the DRSB. The DRSB, New Jersey's Federal Scenic Byway, runs parallel to a portion of the Lower Delaware Wild and Scenic River, along New Jersey's "West Coast" and eastern Pennsylvania border. The free DRSB guide includes the portion of the NPS Water Trail map for the Lower Delaware River that follows the Scenic Byway, and the complete map of the DRSB. Both maps provide river access, parking, restrooms, camping and visitor resources information.



The accomplishments of the DRSB in aiding the NPS Lower Delaware River's management plan goals to achieve sustainable economic growth, are documented in the Lower Delaware River 15-year anniversary report, published in fall 2015. That report is promoted in DRSB's second edition guide.

The free DRSB guide provides NPS-funded maps of the DRSB and Lower Delaware River Water Trail. The printing of the guide was funded by private businesses located along the DRSB. The guide additionally provides visitor information for historic sites, State Park and non-profit organizations found along the Byway and Lower Delaware Wild and Scenic River. The DRSB guide is the product of more than 275 volunteer hours, which includes selling advertisements, organizing the resource information, and distributing the guide. Twenty-five thousand copies of DRSB's second edition guides have been printed. The DRSB is a project of Delaware River Greenway Partnership (DRGP), a Wild & Scenic partner.

by Edie Sharp – DRSB Volunteer Administrator

THE EIGHTMILE RIVER

A Wild and Scenic Trail

What began as a "What if?" conversation about linking trails has evolved to become a possible 26-mile trail that would, when complete, connect five towns and three watersheds. Through the dedicated conservation efforts of local land trusts, towns, the state, and The Nature Conservancy, much of the Eightmile River watershed has been preserved, about 40 percent at last tally – a lot of land for Wild & Scenic hiking. The first ten-mile trail section was fairly easy to create and required only a few negotiations and connecting links. And then there was the Eightmile River itself that needed to be crossed. An old bridge needing a new deck became the preferred crossing location. With partnership funds from the National Park Service, the local Town and a Land Trust, the trail will continue northward for another ten miles, with additional grants

CONTINUED



Photo courtesy of Joel Stocker

Connecting People to the River

CONTINUED

being sought for the remaining connections. Overnight camping is available at several spots along the route, creating a multi-day backpacking opportunity in one of the most densely populated states, Connecticut. The Eightmile River Watershed, as well adjacent river systems, are known for their *Scenic* nature. We anticipate that this trail system will encourage visitors to rediscover their inner *Wild*.

At right: Trail Committee members marking the spot where three towns connect.

Far right: Trail Committee members ready to mark the second 3 mile section of the trail.



By Patricia Young — Program Director, Eightmile River



THE LOWER TAUNTON RIVER

Canoes And Culture at the Berkley Bridge Village Heritage Park

The Berkley Historical Commission has done a phenomenal job of promoting the Bridge Village Heritage Park. Not only has this dedicated group procured services from local contractors and goods providers, but also it has managed to complete tens of thousands of dollars worth of work on the site at a fraction of market cost. Additionally, the Historical Commission has developed a site master plan and a beautiful, informative booklet that highlights the cultural, historical and natural features of the park. These educational materials provide the perfect complement to the experience of visiting this town heritage landscape site.

The busiest public put-in on the Lower Taunton River, the Bridge Village Heritage Park is serving also to re-connect citizens to the historic waterfront on the Taunton River. The Bridge Village Heritage Park Project has stirred local interest and cultural awareness, and created a solid base of community support for the federal designation of the Taunton River as Wild & Scenic. By providing two grants for canoe racks at the site, the TRSC has helped the Park grow and expand its services to paddlers from all over the Commonwealth (and beyond).

by Bill Napolitano — Taunton River Stewardship Council

The Nunckatessett Greenway, “Where History And Nature Meet”

In an effort to improve public access and signage to areas adjacent to the Upper Taunton River, the Nunckatessett Greenway Project is constructing and installing three information kiosks and four small trail signs in areas along the Town River/Bay Circuit Trail. The Town River, or *Nunckatessett*, as the Native Peoples call it, is a focus tributary to the Wild & Scenic Taunton River.



The Town River originates the Hockomock Swamp Area of Critical Environmental Concern (ACEC). This meandering 14-mile river corridor is one of the earliest areas of colonial settlement dating back to the mid 1600s. Before then it was home to the Pokonoket Nation, an ancient civilization that existed in southern New England for thousands of years. The Town River, with several colonial era industrial sites on the National Register of Historic Places, flows through the centers of West Bridgewater and Bridgewater before converging with the Matfield River to form the headwaters of the Wild & Scenic Taunton River.

The Nunckatessett Greenway Project is an effort to create a non-motorized network of land and water trails along the 14-mile Town River and the regional Bay Circuit Trail. When complete, it will link public conservation areas, the centers of West Bridgewater and Bridgewater, and walking trails at Bridgewater State University. With its grant funding, the TRSC has supported the efforts of the Nunckatessett Greenway Project to construct the above mentioned kiosks and trail signs, as well as other projects. The Nunckatessett Greenway is a true regional asset and, as its slogan states, is an area “where history and nature meet.”

by Bill Napolitano — Taunton River Stewardship Council



THE TAUNTON RIVER

Pathways of the Taunton

The Pathways of the Taunton project was initiated in order to increase public awareness of and access to special places along the Wild & Scenic Taunton River. The first phase of the project included the design and production of five interpretive panels that focus on the special public places on the lower Taunton River, from Weir Riverfront Park in Taunton, south to Somerset. The sites of panels on the lower Taunton include Weir Riverfront Park in Taunton, Dighton Rocks State Park in Berkley, Sweets Knoll State Park in Dighton, Broad Cove in Dighton and Somerset, and Somerset

Waterfront Park. Signage for additional sites along the upper Taunton River is also being developed as part of a second phase of the Pathways project.

The Pathways panels contain information on each site and what is special about that particular location. A recurring base map shows all of the access sites on the river and includes a “you are here” star on it. The map also points out other hiking, biking and recreational trails along the Taunton, as well as canoe, kayak and boating facilities. The panels, too, briefly describe the Wild & Scenic River, why it is protected, and include the logos of the site’s conservation partners.



by Bill Napolitano — Taunton River Stewardship Council

Connecting People to the River

CONTINUED

Solstice Celebration on the North Bridge and the Concord River in Concord, Massachusetts.



THE SUDBURY, ASSABET AND CONCORD RIVERS

Celebrating History

The Sudbury, Assabet and Concord rivers (SuAsCo) are recognized for the Wild and Scenic Outstandingly Remarkable Values of scenery, recreation, and ecology. But the rivers are acknowledged also for their historical value as the birthplace of the nation, and for their literary significance as the 19th-century home and inspiration of Emerson, Hawthorne, and Thoreau. The North Bridge, site of "The Shot Heard Round the World," spans the river in Concord. Henry David Thoreau, sometimes called the father of American environmentalism, paddled and described these rivers as he developed his seminal concepts of Wilderness.

To celebrate these beautiful and historically important rivers, each year the River Stewardship Council sponsors Riverfest, two days filled with free events held up and down the three rivers. Activities range from boating near the North Bridge to a National Park Service program, held at the bridge, that describes the Revolutionary War battle of April 19, 1775 that occurred there. A number of events are put on at the Old Manse, the home of Ralph Waldo Emerson's grandfather that overlooks North Bridge and from which his grandfather witnessed the skirmish. Other Riverfest events include music and art programs, and a drama celebrating sister and brotherhood. The Summer solstice is celebrated in the evening with music and a candle-lit flotilla. An educational program on early African-American history is held at the nearby Robbins House.

A tour is conducted at the Old Manse of the re-created vegetable garden first planted by Thoreau in 1842. Further upstream, in Wayland, is the History Paddle, a three-mile, on-the-water college seminar explaining the 10,000-year history of human influence on the river, including Thoreau's role as a surveyor. Downstream of Concord are exhibits at the Middlesex Canal Museum, the site of the dams, first constructed in 1710, that spurred armed conflict between the towns along the river and were not resolved until Thoreau's time 150 years later. The ecological impacts of the dam are still debated today.

Bicycle rides, fishing derbies, wildlife programs, nature and birding walks, plein air painting, photography, invasive water chestnut pulling sessions, and dozens of other events, organized and run by volunteers and partner organizations, attract and encourage the public to come and enjoy the outstanding value of our rivers.

by Tom Sciacca — Town of Wayland Representative to SuAsCo River Stewardship Council

WEKIVA RIVER SYSTEM

Protecting Bears – Engaging People

Since 2012, the Committee, representing a diverse membership of state and regional agencies, Lake, Orange and Seminole local county governments, non-profits, environmental organizations and local citizens, along with the Wekiva Wild and Scenic River Ambassador; has implemented a number of priority actions identified in the Comprehensive River Management Plan.



An innovative study of black bear in the Wekiva River Basin is helping river partners and managers improve their own and the public's understanding of bears and bear behavior.

Outstandingly Remarkable Values (ORVs) have been identified for protection within the river system: scenic, recreation, wildlife and habitat, historic and cultural, and water quality and quantity.

Over the past 30 years increasing human population has created challenges for resource managers trying to protect the Outstandingly Remarkable Values (ORVs) of the Wekiva River System. The Wekiva Wild and Scenic River System Management Plan, completed in 2012, is a federally-mandated comprehensive strategy to protect these ORVs through the joint management of the Wekiva River System Advisory Management Committee, a consortium of local members benefitting from the oversight and coordination of the National Park Service.

Success: Understanding Bears

Florida Black Bear, American Alligator, bald eagle, wood stork, and West Indian Manatee are just a few of the denizens of the Wekiva. To study the dynamics of Central Florida's black bear population, NPS and the Committee are conducting a pilot research project with the University of Central Florida, the Florida Fish and Wildlife Conservation Commission (FWC), the National Park Foundation, the Friends of Wekiva River, Inc. and partners. The study utilizes Global Positioning System (GPS) tracking and video collars to provide data on the movement and behavior of black bears along the urban perimeter and the corridors connecting to the Wekiva River Basin. Through this study, scientists, wildlife managers, and educators will begin to detail how bears use and move through the wildland/urban interface. Additionally, the project will help to increase the public's general understanding of bears and bear behavior.

Success: Creating Connections

The Committee, NPS and partners successfully coordinated and developed 24 kiosks for the Paddle Wekiva trailhead and launch locations. The kiosk panels include environmental stewardship messaging and education as well as information about the Paddle Wekiva water trail. The kiosks complement a Paddle Wekiva guide brochure and map and a new web site highlighting Wekiva Wild and Scenic River programs and projects. The site can be accessed at wekivawildandscenicriversystem.com.

Learn more:

The 41.6 mile Wekiva River System is located northwest of Orlando, within Orange, Seminole and Lake Counties. Five

Jaime Doubek-Racine – DFO, Wekiva Wild and Scenic River System, National Park Service

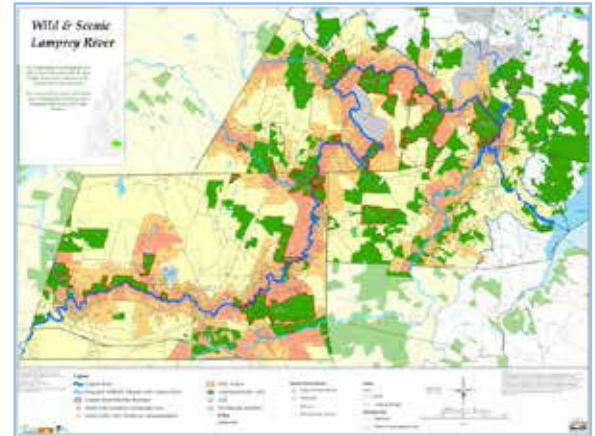
Leveraging Partnerships to Protect Open Space for People and Wildlife

THE LAMPREY RIVER

Protecting Land Along the River

The 50-mile Lamprey River is mostly undeveloped, with diverse and extensive wildlife habitat and high water quality. Keeping it this way is an on-going challenge given that part of its watershed is in one of the most rapidly developing counties east of the Mississippi. The State of New Hampshire and municipalities have enacted protective zoning rules, but these measures can do only so much. Permanent land conservation has protected quality wildlife habitat and water quality, and needs to continue in the future. As funding for permanent land protection becomes scarcer, the Lamprey Rivers Advisory Committee (LRAC) is exploring ways to recognize and reward private landowners who take tangible steps to improve buffers, reduce run-off, and control invasives.

Over the past 20 years, the LRAC has worked with several partners (conservation NGOs, land trusts, municipalities, state programs, and private landowners) to convert almost \$5,000,000 into protection of 3,000 acres of land along the Lamprey River. For every \$3 of LRAC money spent, an additional \$7 was leveraged from other sources. The LRAC has also funded nearly twenty professional wildlife and ecological studies to better understand issues such as habitat for rare mussels and turtles. The selection of lands for protection is also informed by the expertise of several land protection specialists and studies from a variety of sources.



"The Lamprey River Advisory Committee is recognized as a valued land protection partner and the public is impressed when we display maps showing (green) land that we have helped to protect."

by Suzanne Petersen — Outreach Specialist, Lamprey River Advisory Committee

Photo by Shane Morgan



WHITE CLAY CREEK

Partnership Wild and Scenic Rivers: A Win-Win for River Management

Over the past decade, the White Clay PWSR has, on average, matched our federal funds 1:1. In other words, every dollar of federal funds received has been matched 100 percent the past ten years. In just the last two years alone, we have seen an even greater match of 1:2.

Simply put, the federal funds we receive get put to good use. They are invested in conservation easements, best management practices such as stormwater basin retrofits and manure management practices, dam removals, reforestation, and community outreach. Our federal funds enable us to form strong local partnerships with watershed municipalities, water utilities, state and county agencies, other non-profits, private donors, and local citizens who volunteer their time.

CONTINUED

Since our designation in October 2000, we have preserved, at a cost of only \$127,500 in federal funds, just under 2,000 acres of land valued at \$26 million. Our reforestation program, initiated in 2010, has planted 7,500 trees, or 24 riparian acres, at a cost of \$12,442 in federal funds. This past year White Clay Wild & Scenic Steering Committee supported the University of Delaware's Water Resources Agency in the first documented dam removal in the State of Delaware. The dam was the first of seven dams that will be removed in the state of Delaware for shad restoration along the White Clay Creek.

Additionally, in December 2014, nine more stream miles were added to the White Clay Creek's Wild and Scenic designation, thereby bringing the total designated stream miles to 199. Support from the two municipalities through which the stream segments flow, and the assistance of elected officials who sponsored the legislation to include these new stream segments, enabled us to expand protection for our river with no federal land acquisition, and at no cost to taxpayers. How is that not a win-win!

By Shane Morgan – Management Plan Coordinator, White Clay Creek



Photos by Tim Palmer



THE GREAT EGG HARBOR NATIONAL SCENIC AND RECREATIONAL RIVER

Restoring and Preserving Land

Local Managers along the Great Egg Harbor National Scenic and Recreational River recently permanently preserved 5,079 acres in the headwaters of the federally designated Gibson Creek and Stephen Creek. The acquisition cost \$9.7 million of non-federal funds, was the largest single land acquisition in New Jersey in years, and prevented as many as 500 homes from being developed on the land.

Atlantic County purchased 37 acres of fallow farmland within the Great Egg Harbor National Scenic and Recreational River federal boundary of Lakes Creek, and created the first-ever wetlands mitigation bank in New Jersey. Purchasing the land and restoring and creating the wetlands cost \$1,650,300 in non-federal funds.

Atlantic County plans to use these restored wetlands as a mitigation bank to compensate for when they are forced to fill small amounts of wetlands for road and bridge replacements. This progressive project is also a perfect setting for an outdoor classroom to teach about wetlands ecology along the river and Atlantic County, in partnership with the Great Egg Harbor River Council, held the first of these education events on June 12, 2015.

By Fred Akers – Administrator, Great Egg Harbor River Council and Watershed Association

Leveraging Partnerships to Protect Open Space

CONTINUED



The Walker-Blake Graveyard

THE TAUNTON RIVER

Preserving Our History in Taunton and Dighton

The Walker-Blake Graveyard, located on the boundary between the City of Taunton and the Town of Dighton, MA, contains the oldest gravestone in Taunton (Elizabeth Walker, died 1678). The graveyard is located on a beautiful rise that overlooks the Taunton River, and is accessible to the public through the Taunton Municipal Lighting Plant Cleary-Flood Station. The graveyard is maintained by a non-profit organization, the Walker-Blake Graveyard Restoration Project, Inc. (W-B GRP) of North Dighton, MA.

The W-B GRP was established to preserve and restore this one-acre graveyard (which is neither city- nor town-owned or maintained). A 2013 grant from the Taunton River Stewardship Council to the W-B GRP helped to leverage additional private funds that made possible the work of Fanin-Lehner Preservation Consultants to restore several gravestones at the site. The W-B GRP has catalogued the stones on site and, where possible, has researched information on the gravestone carvers as well. The accompanying photo of the graveyard highlights the view from the overlook of the Taunton River.

By Bill Napolitano – Taunton River Stewardship Council

THE TAUNTON RIVER

Wild and Scenic Designation Helps Protect Land

As recently as twenty years ago, there was very little permanently protected conservation land along the Taunton River. The river's 2009 designation as a Wild and Scenic River, and the study process leading to the designation, have served as a powerful catalyst for land protection efforts along the river and its major tributaries. A wide variety of public and private entities, including municipalities, state agencies, and land trusts, have collaborated on multiple land preservation projects, including the projects summarized below. These collaborations have resulted in the protection of more than 1,500 acres that contain significant examples of the "Outstanding Resource Values" identified in the river's Stewardship Plan, including Ecology and Biological Diversity, Agriculture, Recreation, and History and Archaeology.

Notable land protection successes include:

- Great River Preserve/Taunton River Wildlife Management Area, Bridgewater and Middleboro: 390 acres
- MCI Farm Fields, Bridgewater: 400 acres
- Oxbow Complex, Raynham/Taunton: 174 acres
- Sweets Knoll State Park, Dighton: 56 acres
- Lower Winnetuxet River Corridor, 234 acres

While all involved can and should take satisfaction from these projects, our land protection work is far from over, and efforts continue toward the preservation of many other important landscapes across the Taunton watershed.

By Bill Napolitano – Taunton River Stewardship Council

Many Hearts and Hands Nurture the Tom Saeger Preserve

Near the crest of a slope at the Tom Saeger Preserve, three generations of volunteers huddle together to plant tree seedlings. A 7-year-old girl, her face etched in concentration, grasps a rubber mallet in both hands and pounds a stake into the ground to hold deer fencing in place. An older man and woman stand nearby offering encouragement and instruction.

Thirty volunteers have gathered here on this sunny Saturday to help plant 800 trees donated by Partners for U.S. Fish and Wildlife. The Hunterdon Land Trust acquired the preserve, located near 150 Shire Road in Milford, back in 2010 with funding from New Jersey State Green Acres Program and Phillipsburg Riverview Organization, Hunterdon County, Holland Township and the Victoria Foundation. It consists of 42 acres of farm fields, forested areas and slopes, and its preservation helped protect the Milford Creek, a tributary that flows into the Delaware River.

After taking title to this diamond in the rough, the Land Trust began overseeing it to promote a better wildlife habitat and increase its biological diversity. A forest stewardship plan was created, and volunteer groups — including members of the Jersey Off Road Bicycle Association (JORBA) — stepped up to help. A contractor roared through a swath of the property to clear the bulk of the invasives, and later, volunteers from Janssen Pharmaceuticals ripped out invasive plants from the property's periphery.

Unfortunately, Hurricane Sandy knocked out some of the valuable tree canopy. *Ailanthus*, a fast-growing invasive tree, took advantage of the additional sun and lack of native trees and spread like wildfire. HLT Steward Tom Thorsen and volunteers returned to combat it and another batch of pesky Mile-A-Minute weed that coated a section of the land with a six-inch blanket.

About \$15,500 in funding for this work came from multiple sources: Natural Resources Conservation Service, National Park Service's Lower Delaware Wild & Scenic Program and Conservation Resources Inc., which helped cover the removal of the vines



and *Ailanthus*, and field the hydro axe. A grant from the Watershed Institute, a branch of the Stony Brook-Millstone Watershed Association and the Wild & Scenic Program, provided funding for the deer fencing.

With the invasives under control, volunteers returned on several occasions to plant Shagbark Hickories, Blackhawk Viburnum and other trees that will prevent soil erosion, improve the wildlife habitat, sequester carbon and filter pollutants.

In 2014, Hunterdon County Planning Board and the Cultural and Heritage Commission recognized the work accomplished at the preserve with the Hermia Lechner Award, given to a project that protects the environment and promotes the conservation of natural resources.



"Thanks to the efforts of various partners and volunteers, everyone can enjoy the Saeger Preserve for hiking, birding, cross-country skiing and biking, with the added bonus of knowing that by preserving the land, we're also helping protect the quality of our drinking water," said Patricia Ruby, executive director of the Hunterdon Land Trust.

Many hands and hearts have worked together in the fields and forests of the Saeger Preserve to protect these beautiful acres. These roughly one hundred volunteers intuitively grasped the innate relationship we share with the land and water around us, and wanted others to experience the joys of an afternoon immersed in nature.

By Dave Harding — Director of Outreach, Hunterdon Land Trust

Engaging and Educating Volunteers and Youth

THE LAMPREY RIVER

Reaching Out to Both Children and Adults

Helping people to see and appreciate the river's assets and vulnerabilities has long been an important focus of work. Some of the widely circulated publications include numerous brochures, newsletters, articles for local newspapers, "The Lamprey River Tour Guide and Map," and *The Story of Peter Little Bear*. Family-friendly programs are offered each year that combine history, nature, and recreation, such as the "Hike It, Bike It, Like It" series, "Herring Aid" in partnership with New Hampshire Fish and Game, and family fun days with local recreation departments. Workshops for adults have ranged from "Your Wallet, Your Water, Your Watershed" to salt reduction programs and "How to Make Your Septic System Last Forever." *The Lamprey River Curriculum* for fourth graders combines New Hampshire social studies and science standards and culminates in a popular field trip to study the river's history, water quality, and nature. The Small Grants outreach program has resulted in six high quality videos, a regional tool lending library for invasive weed removal, park planning, and an integrated town trail plan. The Junior Rangers program has been offered to local summer recreation program participants and is available on-line for families. The comprehensive website, www.lampreyriver.org, serves as a hub of Lamprey River information and resources generated by the advisory committee as well as university researchers.



Photo by R.C. Grimsley

Participants try to capture dragonflies at a family fun day event.

"In real estate, it's all about location, location, location. With the environment, it's all about education, education, education."

By Suzanne Petersen — Outreach Specialist, Lamprey River Advisory Committee

THE DELAWARE RIVER

Education via the Delaware River Experience

The Delaware River Experience (DRE) Environmental Education Program, formed in 2004, was broadened in 2009 as a collaborative effort among the non-profit Delaware River Experience, Inc., the Bucks County Conservation District, and the Hunterdon County Soil Conservation District. Its enlarged purpose is to present a hands-on learning program that fosters a sense of community and ecological appreciation of the Delaware River. The program helps students in sixth through eighth grades from both Hunterdon County, New Jersey and Bucks County, Pennsylvania develop an understanding of the vast richness of the Delaware River and its tributaries, and the importance and complexity of managing such a vibrant natural resource.



Photo courtesy of Dee Keller, Delaware River Experience

CONTINUED



The program uses *River Otter*, the Delaware River Experience's Coast Guard-certified, 53-foot, motorized tri-pontoon riverboat, as a floating classroom and laboratory for up to 35 students and teachers. The DRE developed an innovative river-based education program that correlates with each state's core curriculum standards and consists of a variety of modules from which teachers can choose. The program can be tailored to fit within several broad disciplines. Lessons are inquiry-based and center on hands-on exploration and problem-solving activities that are conducted both in the classroom and on the boat. As DRE's Dee Keller observes, the DRE's mission is to "inspire people of all ages to conserve

and respect the Delaware River and its tributaries through unique, hands-on educational experiences."

2014 9 trips for 51 adults and 180 children, representing 4 schools and 2 Scout/Brownie troops

2013 5 trips for 3 schools, a Brownie troop, and a summer camp

2012 10 trips for 54 adults and 227 students, representing 6 schools and 1 girl scout troop

2011 11 trips for 41 adults and 246 students, representing 6 schools and a summer camp

By Julie Bell — River Manager, National Park Service

THE GREAT EGG HARBOR RIVER

Educating Youth

The Great Egg Harbor River Council, responsible for the long-term protection of the Great Egg Harbor National Scenic and Recreational River, this year leveraged \$25,000 from the National Park Foundation and Northeast Regional Director Mike Caldwell's Call to Action Grant fund to bring more than 300 seventh-grade students to a floating classroom on the river.

Eleven floating classroom events sailed aboard a 45-foot pontoon boat throughout the past year, enabling 30 seventh-grade students per trip to conduct scientific fisheries sampling and data collection. Combined with service-based learning, the students helped to determine whether fisheries resources in the Great Egg Harbor River and Estuary (a designated unit of the NPS) are adequate to provide a multiple-species, sustainable ecosystem.

In addition to the goals of advancing conservation research, providing direct visitor involvement, and promoting public stewardship of the NPS's Great Egg Harbor River, the overall project outcomes are useful tools to help improve the protection of River Herring and other migratory forage fish, one of the river's Outstanding Resource Values (ORVs).

By Fred Akers — Administrator, Great Egg Harbor River Council and Watershed Association



Engaging and Educating Volunteers and Youth

CONTINUED



THE TAUNTON RIVER

Uncharted Waters: Transforming At-Risk Students into Wild & Scenic River Ambassadors

"Beginning in November 2014, the National Park Service partnered with Resiliency Preparatory School students in Fall River, Massachusetts, to create *Uncharted Waters*, a social media outreach campaign for the Taunton Wild & Scenic River. Resiliency Prep students chose *Uncharted Waters* to reflect the feeling of exploration and to convey the excitement of the discoveries to their friends. The team first interviewed members of the Taunton Wild & Scenic River Stewardship Committee (RSC) to learn about the river and the passion of those who care deeply for it. Through these interviews, the team developed a plan for a series of exploratory field trips that included river recreation, and learning from environmental professionals and others knowledgeable about the Taunton River. In advance of the field trips, the students conducted their own research to identify Taunton River stories and topics that would appeal to their peers in Fall River.

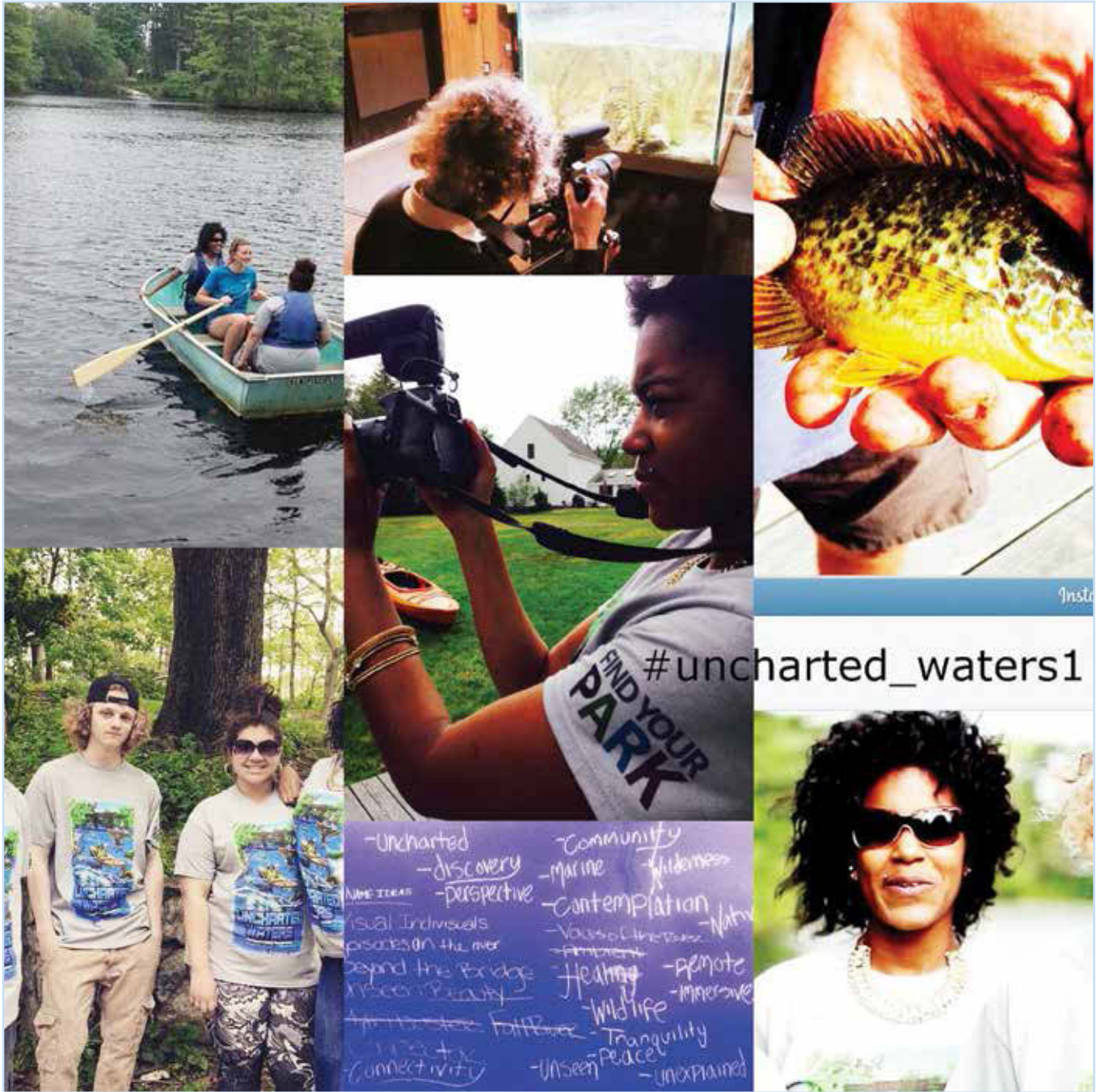
The *Uncharted Waters* team discovered unexpected beauty and wonder in their Taunton River investigations and excursions: a winter seal watch cruise, kayaking, fishing, and a visit to an archeological museum were a few of the team's adventures. Under the guidance of Ben Gilbarg, Resiliency Prep instructor and professional videographer, the team produced videos of celebrating their Taunton River experiences and sharing their newfound knowledge. Tasked to communicate their experiences with peers and other Fall River residents, the team first launched an Instagram campaign to introduce and build anticipation for a series of short videos showcasing their favorite new river.

Too often young people are unaware or isolated from the natural world around them; for the *Uncharted Waters* team members, access to nature had also been limited by their urban environment. However, *Uncharted Waters* gave them a transformative experience of the hidden gem that is the Taunton River. Mike Miller, one of the Taunton Wild & Scenic River's new ambassadors, went to Sweet Knolls State Park to seek inspiration for telling his part of the story. "It's beautiful out here, it's almost serene... Back at Fall River, it feels really tight and constricted, and out here it feels... free." Bringing young people to nature — to close the deficit — and experience this beautiful waterway had a life-changing impact on them; a powerful experience informed by knowledge about the river's habitat, history and relevant conservation issues.

By Charles Tracy — Rivers, Trails, and Conservation Assistance Program, National Park Service

"... just free, you know what I mean? It feels great. It's almost like spiritual. Closer to nature, it's just like I don't know... closer to everything around me. Come out here to the Taunton River."

Mike Miller, Uncharted Waters Team



Restoring Aquatic Ecosystems

THE FARMINGTON RIVER

A Stellar Monitoring Program



Pat Kelly (foreground) and Sue Brachwitz inspect the stream invertebrates as part of the water quality monitoring program on the Farmington River's Wild & Scenic stretch.



Volunteer Shawn Greenlaw checks the invertebrates collected from the stream bottom, to see if the most pollution-sensitive species are still thriving.



Local volunteers do the water sampling to provide the all-important baseline information on the river's condition.

It takes a team to track a river's health. It takes observing, reporting, sampling, analyzing samples, entering data, communicating the results, and doing it for many locations, year after year. Kept up, it reveals a detailed picture of the river's dynamic existence, and spots water quality problems as they arise.

On the West Branch of the Farmington River, a Partnership Wild & Scenic River since 1994, this type of water quality monitoring is organized by a citizens' group, the Farmington River Watershed Association (FRWA). From May through October, FRWA's volunteers sample 15 locations monthly on the main river and three tributaries, often getting up before daybreak to do their routes. This amounts to 200 hours of volunteer work per season.

Volunteers deliver their water samples to a lab run by the area's major water utility, the Metropolitan District Commission. There, samples are analyzed for physical, chemical, and biological factors, including pH, turbidity, nutrients, metals, and fecal coliform bacteria. The results come back to FRWA for analysis and posting on the organization's website. Ultimately, the information goes to the water quality database of the CT Department of Energy and Environmental Protection (CT DEEP) and is used to satisfy reporting requirements of the Clean Water Act.

Luckily, most of the Wild & Scenic reach has good water quality. But where results are less good — mainly within or near troubled tributaries — FRWA and other local partners can (and do) zero in for projects to reduce pollution, educate, and plan better management.

And who stays on top of all this? The indispensable organizer of the volunteer training, intern mentoring, water sampling, delivery, analysis, data management and reporting is Alisa Phillips-Griggs, FRWA's Water Quality and Projects Coordinator.



Alisa Phillips-Griggs takes down observational data in a Farmington River tributary.

CONTINUED

And Alisa's work receives vital support from the Partnership Wild & Scenic Rivers program. A modest \$15,000 of annual National Park Service support is more than doubled by in-kind help from volunteers, interns, the water utility, and CT DEEP.

"We have the knowledge, the volunteers, and the great partners," explains Eileen Fielding, FRWA's Executive Director. "But it's absolutely essential to have Alisa there, pulling the elements together year after year. Our local Wild and Scenic Committee supports that important piece."

By Eileen Fielding – Farmington River Watershed Association Executive Director



The former site of Finesville Dam, after restoration of natural flow.

THE MUSCONETCONG RIVER

Working Hard to "Free" the River

The battle cry for the Musconetcong Watershed Association (MWA) has long been, "Free the Musky! Breach the dams! Let the river flow!" Since the 2006 designation of the Musconetcong as a National Wild and Scenic River, the MWA has worked tirelessly to remove dams along the Musconetcong River. The goal of dam removal was seen as a first step in a long-term effort to restore the river's natural flow, improve water quality, reconnect migratory fish, including American eels, alewife and blueback herring, with the Musconetcong, and improve habitat for trout, bass, and other local fish populations. Over the past nine years MWA was successful in removing four low-head dams: the Gruendyke dam (2008), the Seber dam (2009), the Riegelsville Dam remnant, and the Finesville Dam (2011).

All of the removed dams were old, obsolete and in serious disrepair. In most cases they had been breached and were not serving their original purpose. In all of these cases, the decision to remove the dams was done through a local decision-making process led by MWA. In the course of working on these dam removal projects MWA was instrumental in forming the Musconetcong River Restoration Partnership, a multidisciplinary team of state and federal resource agencies, non-profit organizations and individuals working to improve and restore the Musconetcong River.

CONTINUED

Restoring Aquatic Ecosystems

CONTINUED



Finesville Dam before removal, above; during removal, at right.

The partnership includes: Musconetcong Watershed Association, New Jersey Trout Unlimited, American Rivers, North Jersey Resource Conservation and Development, USDA-Natural Resources Conservation Service, U.S. Fish and Wildlife Service, U.S. Army Corps of Engineers, National Oceanographic and Atmospheric Administration, National Park Service, and the New Jersey Department of Environmental Protection.

In 2013, the Musconetcong River Restoration Partnership received the Coastal America Partnership Award for its efforts to remove the Finesville Dam. The Coastal America Partnership Award, the highest level award granted by the Coastal America Program, was awarded by NOAA to all members of the partnership in recognition of their efforts to remove the Finesville Dam and enhance the natural values of the Musconetcong River in northwestern New Jersey.

Next on the dam-removal agenda for the Musconetcong River Restoration Partnership are the 18-foot-high Hughesville Dam and the 37-foot-high Warren Glen Dam. Plans for the Hughesville Dam removal have already been developed and MWA expects to see the dam removed by late-2015, thereby opening another five miles of the Musconetcong to migratory fish from the Delaware River.

Story by Musconetcong Watershed Association; edited by Charles Barscz, National Park Service

THE WESTFIELD RIVER

Wild Brook Trout and Coldwater Species Benefit

The Westfield River and its tributaries support some of the best coldwater streams in Massachusetts and present one of the greatest opportunities for river conservation in Southern New England. Intact populations of wild Eastern brook trout (*Salvelinus fontinalis*) — one of the river's "outstandingly remarkable values" — reside in many of the Westfield River's main branches and tributaries.

The Wild & Scenic Westfield River Committee supports coldwater species conservation through a variety of efforts. In addition to providing funds to projects, the Committee and its Member Organizations have helped communities develop conceptual designs and cost estimates for road-stream crossings that meet fish passage standards as well as maintain adequate passage for high flows, sediment and other debris during storm events. This information has been used to obtain additional funding and to develop final designs for several road-stream crossings in the watershed.

CONTINUED



Volunteers monitor brook trout populations along Kinne Brook in Chester as part of a restoration project that will remove three stream barriers and restore access to more than ten miles of coldwater habitat.

The Committee co-sponsored three "Improving Stream Crossings: Flood Resilient, Fish Friendly" trainings. The workshops covered road-stream crossing projects from site assessment to permitting, to installation, with an emphasis on maintaining and restoring the habitat and economic values of the stream. Attendees included highway departments, contractors, conservation commissions, planners, engineers, and other conservation partners.

In addition to working with their towns, Stream Team volunteers conduct stream surveys, assist with pre- and post-monitoring, and contribute numerous hours to ongoing restoration projects.

The Committee's Riparian Conservation Grants Program is among its most successful programs, awarding small grants to help cover the transaction costs of conservation projects. To date, more than 688.5 acres in seven communities have been protected. The largely-forested landscapes along these protected reaches provide both shade cover that helps to reduce the thermal impacts of solar radiation heating, and the inputs from large woody habitat and organic material that feed the stream aquatic biota.



Westfield State University Students monitor sediment mobility on Kinne Brook post-dam removal.

By the numbers:

13 engineering site recons and conceptual plans for fish-friendly road-stream crossings

8 culvert replacements with benefits to fish and wildlife

3 dam removals to restore fish passage

3 "Improving Stream Crossings: Flood Resilient, Fish Friendly" trainings

688.5 acres and **13,450** ft of stream protected



The Town of Becket used the opinion of probable costs and conceptual designs, funded by the Committee, to leverage an additional \$399,000 in grant funds to replace this road-stream crossing with a fish-friendly, flood resilient structure. The road-stream crossing had washed out two times in less than six years.

By Carrie Banks – Westfield River Coordinator, Massachusetts Division of Ecological Restoration



Boat Kids by Building Boats on the Maurice River

Restoring Aquatic Ecosystems

CONTINUED

THE MAURICE RIVER

Protecting the Threatened Osprey

Citizens United to Protect the Maurice River and Its Tributaries, Inc.'s Osprey Colony Project is one of the organization's most successful endeavors. The project was established to help re-establish an osprey colony on the Maurice River and its tributaries. The osprey, often referred to as the fish hawk, is a raptor, a bird of prey. Today the largest concentrations of osprey are found on the northeast coast of the U.S. But in the 1960s their populations had plummeted, an alarming fact, and the beginning of a national environmental crisis. By the 1970s osprey were considered an endangered species; it was feared they might perish altogether, emptying the skies of osprey making their annual migrations to and from South America. Their decline, the result of chemical contamination by DDT (dichlor-diphenyl-trichloroethane).

Human intervention has been the hallmark of osprey recovery. Along with a ban on DDT, one of the key ingredients to their recovery has been the construction of nesting platforms. While progress has been made on their behalf, ospreys are not out of danger. On the Delaware Bay shore New Jersey Endangered and Nongame Species Program biologists have documented a failing colony due to DDE, a derivative of DDT. And on the Atlantic Coast, during the summers of 1997 and 1998, there were severe nest failures, possibly linked to food supply. Nevertheless, the Maurice River osprey colony has been on a steady increase, and we hope this pattern continues.

Why care? Osprey, like many creatures at the top of a food chain, serve as biological indicators of contaminants in the environment long before the problem is evident in human health records. The osprey's plight has long served as one of the sentinels for a need for change. The osprey's food chain is an excellent model of our own vulnerabilities to toxins in the environment. Ospreys are one of the migrating birds that led to the 1993 designation of the Maurice River and its Tributaries as a Partnership National Wild and Scenic River.

In 1986 Citizens United's first pilot nest was erected on the Maurice River. Prior to that time one or two nests were erected by New Jersey Fish, Game and Wildlife and about 3-6 chicks fledged annually. Over the past 22 years Citizens United has erected more than 55 nests in the Maurice River Watershed, helping to assure the survival of this important species. The Osprey remains a threatened species in the State of New Jersey.



By Citizens United to Protect the Maurice River & Its Tributaries, Inc.; edited by Charles Barscz, National Park Service

THE EIGHTMILE RIVER

Every Fish Counts

The pristine waters of the Eightmile River and its tributaries, combined with the proximity of its mouth located eight miles upstream of Long Island Sound on the Connecticut River, make it a very important spawning and nursery habitat for a variety of anadromous fish species. A fishway at the first major dam on the river has been passing thousands of fish since 1998, but accurate identification and counts had been lacking. With a grant from Trout Unlimited and NOAA Restoration Center, in 2014 an underwater video recording system was installed at the fishway.



An underwater video recording box specially designed for the fishway.



American shad passing through the fishway recording box.

CONTINUED

Counted species include Atlantic salmon, American shad, alewife, blueback herring, sea lamprey, sea-run brown trout. Other species of interest are white suckers, resident trout and the American eel. In the spring 2015 run, the Eightmile River had one of the highest numbers in the state for blueback herring, at 11,690 individuals passing. And to quote Timothy Wildman, a state fisheries biologist, "It is always a treat to see a bright sea-run Atlantic Salmon fly past the window." Accurate data on the species present in the river system allow the Eightmile River Wild & Scenic Coordinating Committee and its partners to focus management efforts on projects that ensure native fish habitat is protected.

By Patricia Young – Program Director, Eightmile River

THE TAUNTON RIVER

Restoring the Mill River

The Taunton River Stewardship Council (TRSC) is working with federal, state, and local organizations to improve water quality, enhance public safety, and restore aquatic habitat on the Mill River, a major tributary of the Taunton River, in Taunton, Massachusetts. The project entails removing three dams (two have been completed) and constructing fish and eel ladders at a fourth (rehabilitated as part of a state bridge improvement project) that, when concluded, will reconnect to the Taunton River and Narragansett Bay 30 miles of intact mainstem and tributary habitat in the upper Mill River watershed.



The Taunton River has the largest herring run in New England. The Massachusetts Division of Marine Fisheries estimates that the Mill River could itself have an annual run of more than 100,000 fish once the project is complete (target date: fall 2016). In fact, once the first dam was removed at the Hopewell Mill/Taunton State Hospital site, herring were observed by an underwater video monitoring system set up by the Massachusetts Division of Marine Fisheries. This marked the return of herring to the Mill River for the first time in almost two hundred years!

Elsewhere in the Taunton River Watershed, with similar goals in mind, we are working with partners to advance dam removals along other major tributaries, including on the Satucket River, Rattlesnake Brook, and the Cotley River. These projects are all in various stages of design and permitting. The targeted dams should be removed by 2017.

By Bill Napolitano – Taunton River Stewardship Council



The Newest Partner

UPPER MISSISQUOI AND TROUT RIVERS

Designation in Vermont Protects Forty-Six Miles

The Upper Missisquoi and Trout Rivers Wild and Scenic Study Committee was comprised of local municipal appointees and partner organizations that spent three years studying possible Wild and Scenic designation of the Upper Missisquoi and Trout Rivers in northern Vermont. There were seventeen official appointees from nine municipalities, and nine regular attendees from five partner organizations. All were steadfast volunteers who invested countless hours learning about the Upper Missisquoi and Trout Rivers. The group's mission was to facilitate the transfer of information among the riverfront communities, and to evaluate the effects of Wild and Scenic designation. Study Committee meetings were open to the public and driven by consensus. One of the chief products of the Study process was a Management Plan that contains voluntary strategies for protecting rivers-related resources.

The Study Committee confirmed that the Upper Missisquoi and Trout Rivers contain a number of Outstandingly Remarkable Values (ORVs). These include Scenic and Recreational Resources, such as swimming holes and paddling, Natural Resources, like waterfalls, cascades and gorges, and Historic and Cultural Resources, such as covered bridges. On October 18, 2012, the Committee unanimously voted in favor of recommending inclusion of the Upper Missisquoi and Trout Rivers in the National Wild and Scenic Rivers System, and subsequently presented warrant articles seeking affirmation of the management plan and support for federal designation for each of the riverfront communities.



(Left-right) Tom Berry (Senator Leahy), Jacques Couture (Chair), Shana Stewart Deeds (Coordinator), Peter Welch (Congressman), Jim MacCartney (NPS), Todd Lantery (Vice-Chair), Haley Pero (Senator Sanders)

The municipalities of Berkshire, Enosburgh, Enosburg Falls, Montgomery, North Troy, Richford, Troy and Westfield voted at their March 2013 Town Meetings in favor of petitioning Congress for designation. Senator Bernie Sanders (I-VT) introduced in the Senate legislation co-sponsored by Senator Patrick Leahy (D-VT), while Representative Peter Welch (D-VT) introduced the measure in the House. The House bill (H.R. 2569) passed in September 2014, and the Senate bill (S. 1252) passed in December 2014. On December 19, 2014, President Barack Obama signed into law the Act (P.L. 113-291) designating the Upper Missisquoi and Trout Rivers as National Wild and Scenic Rivers.

On June 6, 2015, the Upper Missisquoi and Trout Rivers Wild and Scenic Committee, Northern Forest Canoe Trail, Missisquoi River Basin Association (MRBA), and Northwest Regional Planning Commission of Vermont, hosted a joint celebration to recognize National Trails Day, Northern Forest Canoe Trail's 15th Anniversary, and the successful designation of the Upper Missisquoi and Trout Rivers as Vermont's first components of the National Wild and Scenic Rivers System. The celebration also honored all those who worked selflessly to achieve the designation, including local Committee volunteers, partner organizations, and the dedicated staff and members of Vermont's Congressional delegation.

The celebration began with the Vermont Dairy Day Festival Parade in Enosburg Falls, the State's longest parade, where the river partners sponsored a float that featured a "cow-noe" (canoe painted with Holstein graphics) handcrafted by Wenonah Canoe. The "cow-noe" later was raffled off to support the *Celebrate the Missisquoi!* speaker series that began with the

CONTINUED

June 6, 2015 celebration, and ended October 4, 2015 with an event about the covered bridges in the Town of Montgomery, Vermont. After the parade the public was invited to attend an outdoor dedication celebration at the Abbey Restaurant in Enosburg Falls. The program included Congressman Peter Welch, Tom Berry for Senator Patrick Leahy, Haley Pero for Senator Bernie Sanders, Vermont Attorney General William Sorrell, representatives from each of the sponsoring organizations, and Jim MacCartney and Lelia Mellen of the National Park Service. John Little, long-time MRBA President, was bestowed the River Management Society's coveted Frank Church Wild and Scenic Rivers Award that recognizes an individual involved in the protection of congressionally-designated Wild and Scenic Rivers. He was honored for his tireless leadership to build broad support for the designation of the Upper Missisquoi and Trout Rivers, and for being the champion and guiding force in coordinating activities during the 10-year process of achieving success. The celebration wrapped up with more than forty participants canoeing five miles of the Missisquoi River, from Richford, Vermont, to its confluence with the Trout River, in East Berkshire, Vermont.



Jim MacCartney (NPS), John Little (MRBA), Shana Stewart Deeds (Coordinator). John Little receiving the River Management Society's Frank Church Award.

Now that the Upper Missisquoi and Trout are designated as National Wild and Scenic Rivers, a local Management Committee is being established to stay true to the spirit of the designation. The Management Committee's mission is to collaborate with partner organizations and the local riverfront communities, of Berkshire, Enosburg Falls, Enosburgh, Lowell, Montgomery, North Troy, Richford, Troy, and Westfield, to steward and promote the Upper Missisquoi and Trout Rivers, and to support good river management. This will be accomplished using the voluntary Management Plan as a road map to protect and enhance the Upper Missisquoi and Trout Rivers and their related resources.

**By Shana Stewart Deeds – Study Coordinator, Upper Missisquoi and Trout Rivers;
and Jim MacCartney – River Manager, National Park Service**



Photo courtesy of Wilderness Inquiry

PARTNERSHIP WILD & SCENIC RIVERS

20 Years of Success
Protecting Nationally Significant
River Resources through
Locally Based
Partnerships

Front cover: Lower Delaware River • Back Cover: Taunton River • Cover photos by Tim Palmer

Partnership Wild and Scenic Rivers Program Contact Information

Chuck Barscz, Chief
NPS Northeast Region Wild and Scenic Rivers Program
200 Chestnut Street
Philadelphia, PA 19106
phone: 215-597-6482
charles_barszcz@nps.gov

Jamie Fosburgh, New England Team Leader
NPS Northeast Region Rivers Program
15 State Street
Boston, MA 02109
phone: 617-223-5191
jamie_fosburgh@nps.gov

Joan Harn, NPS River Programs Manager
Conservation and Outdoor Recreation Programs
1201 Eye Street NW, (org. code 2240)
Washington, DC 20005
phone: 202-354-6929
joan_harn@nps.gov

River Websites

Eightmile River, CT – eightmileriver.org
Farmington River, CT – farmingtonriver.org
Great Egg Harbor, NJ – gehwa.org/river-council/
Lamprey River, NH – lampreyriver.org
Lower Delaware River, NJ & PA – lowerdelawarewildandscenic.org
Maurice River, NJ – cumauriceriver.org
Missisquoi and Trout Rivers, VT – vtwsr.org
Musconetcong River, NJ – musconetcong.org/managementcouncil.php
Sudbury, Assabet, Concord Rivers, MA – sudbury-assabet-concord.org
Taunton River, MA – tauntonriver.org
White Clay Creek, PA – whiteclay.org
Wekiva River, FL – wekivawildandscenicriversystem.com
Westfield River, MA – westfieldriverwildscenic.org

**FIND YOUR
PARK**

2016
National Park Service.
CENTENNIAL